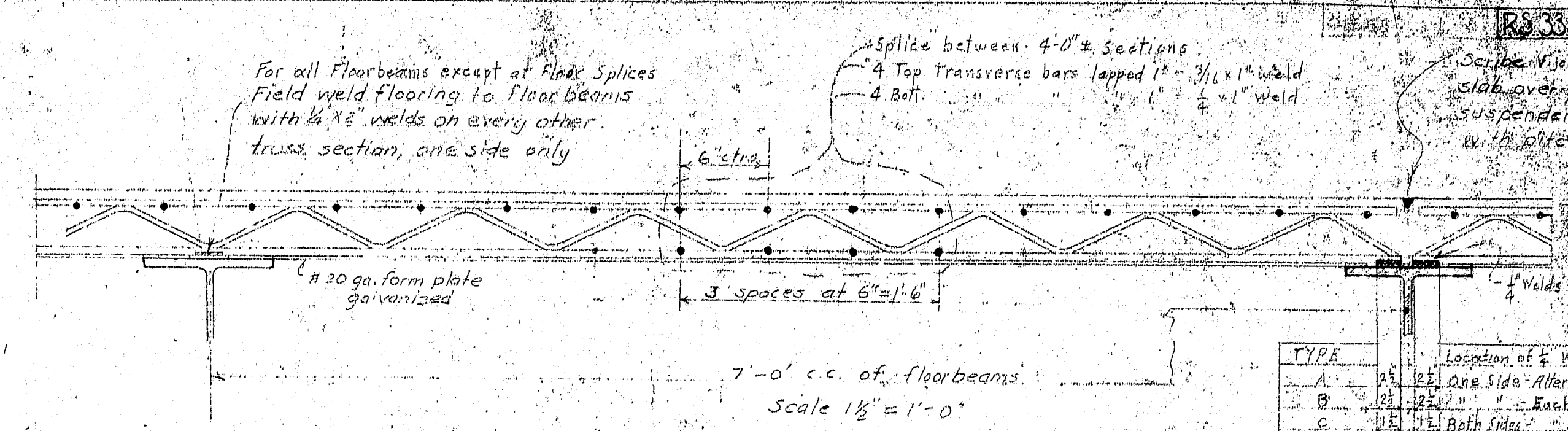
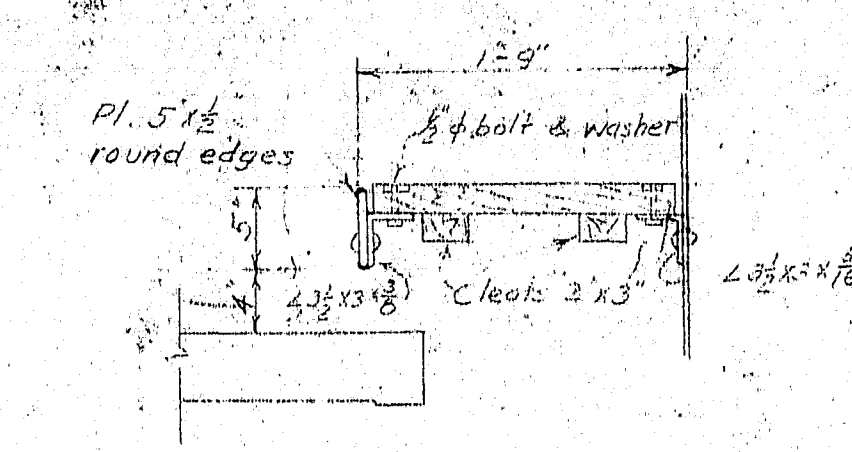
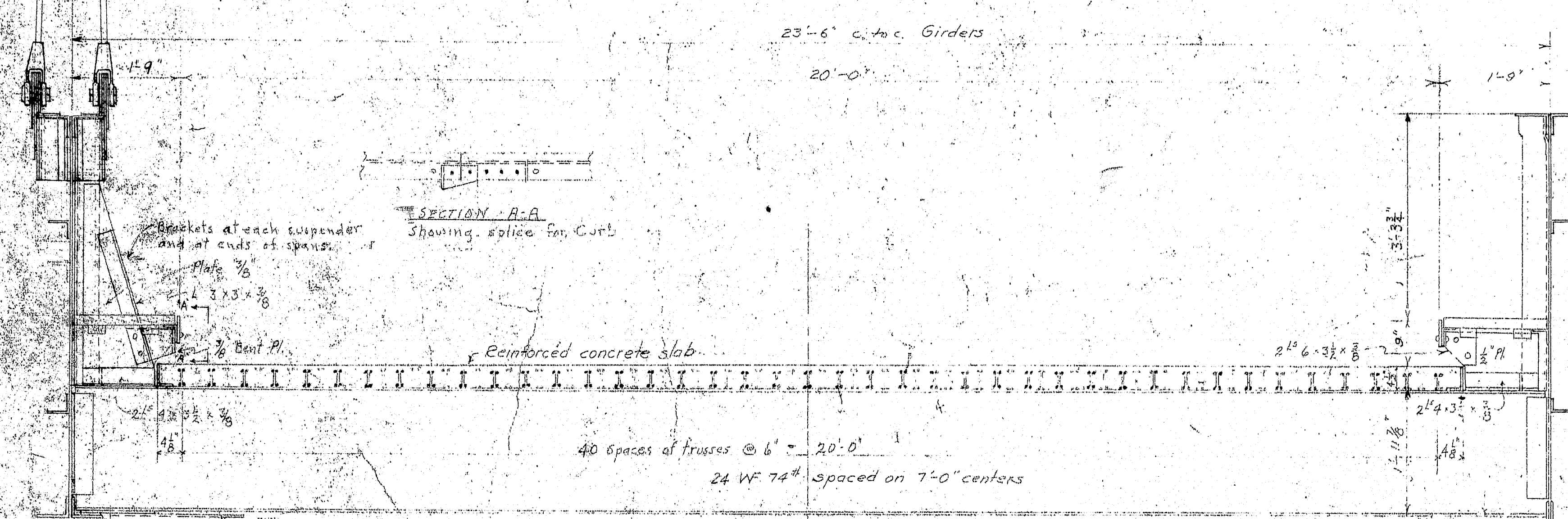


DETAILS OF SIDE WALK
Scale 1" = 1'-0"

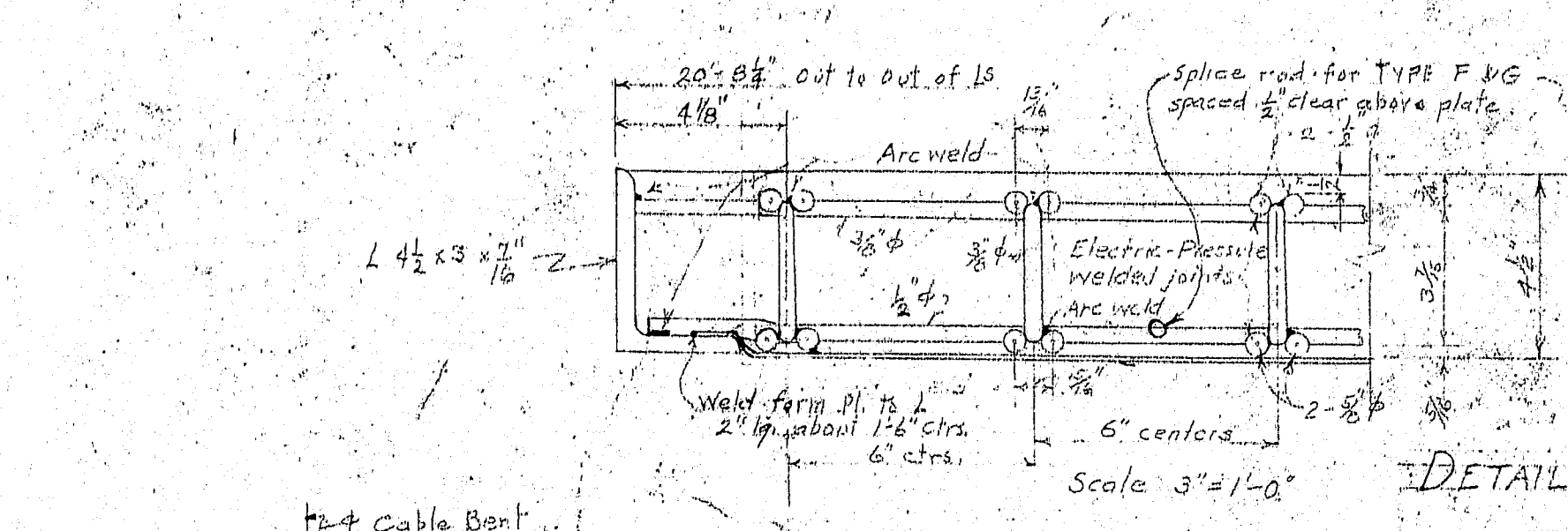


TYPE	Location of Welds	Splice Ends
A	One Side Alternate	None
B	Both Sides	Both Sides
C	Both Sides	Both Sides
D	Both Sides	Both Sides
E	Both Sides	Both Sides
F	Both Sides	Both Sides
G	Both Sides	Both Sides

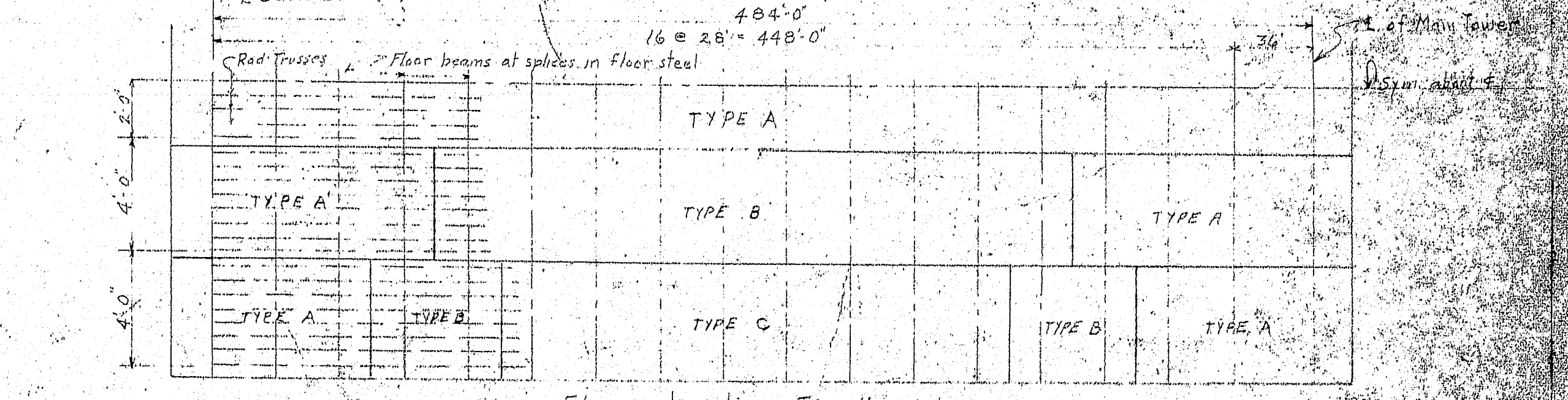


HALF SECTION AT SUSPENDER CONNECTION
Scale 3/4" = 1'-0"

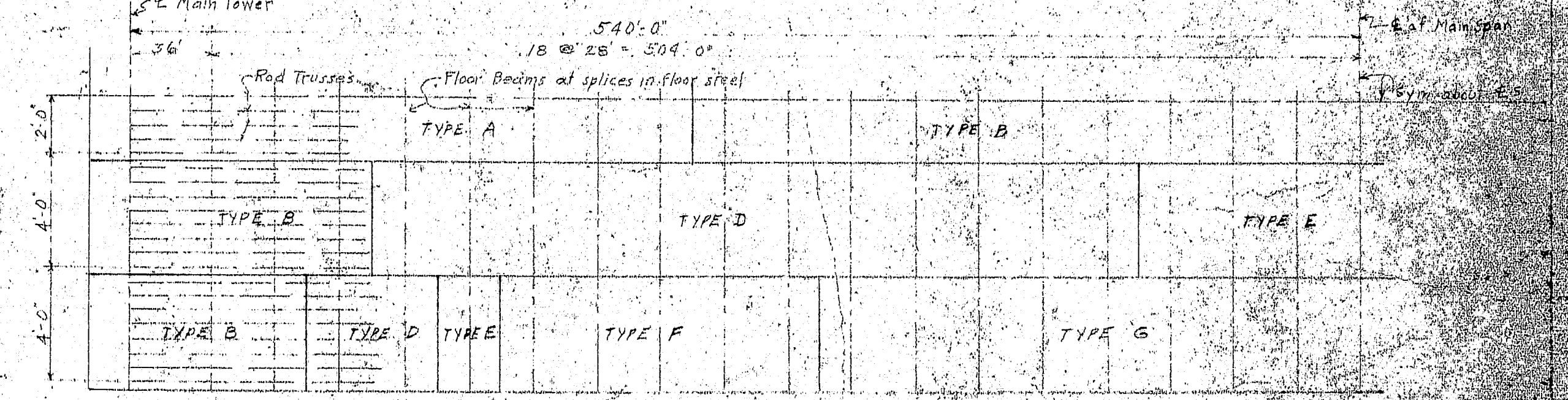
HALF SECTION AT FLOORBEAM BETWEEN SUSPENDERS
Scale 3/4" = 1'-0"



DETAILS OF ROADWAY DECK SLAB
Scale 3/4" = 1'-0"

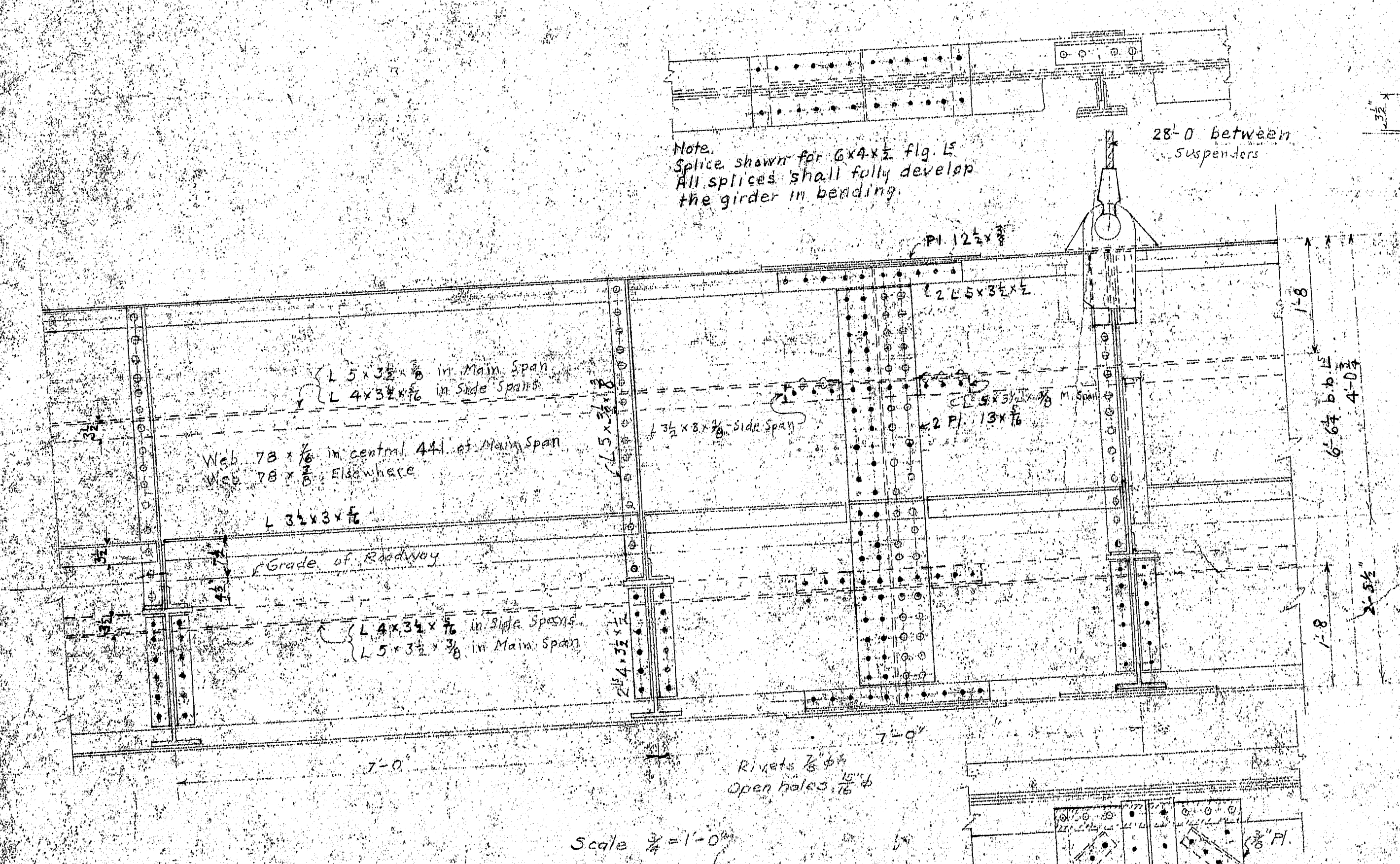


LOCATION AND TYPES OF FLOOR SPICES FOR SIDE SPACES

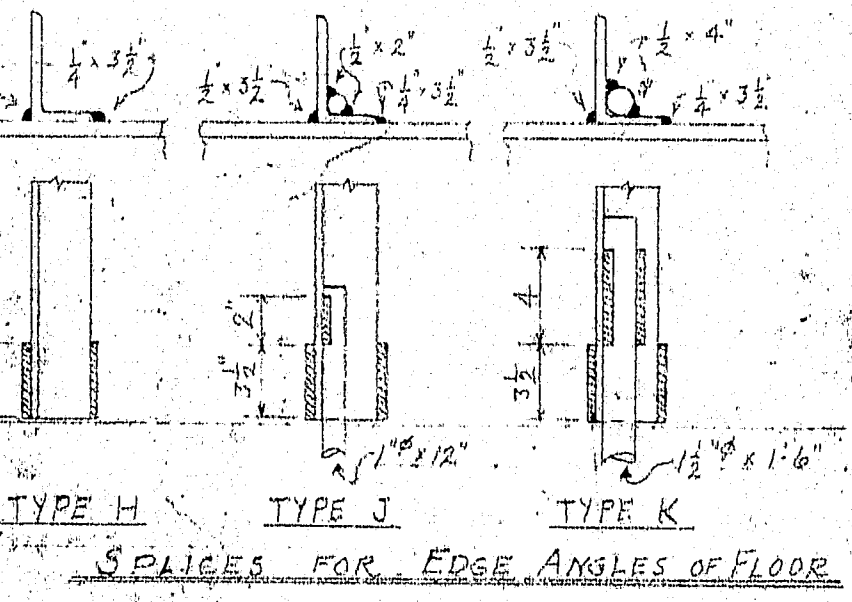


LOCATION AND TYPES OF FLOOR SPICES FOR MAIN SPAN

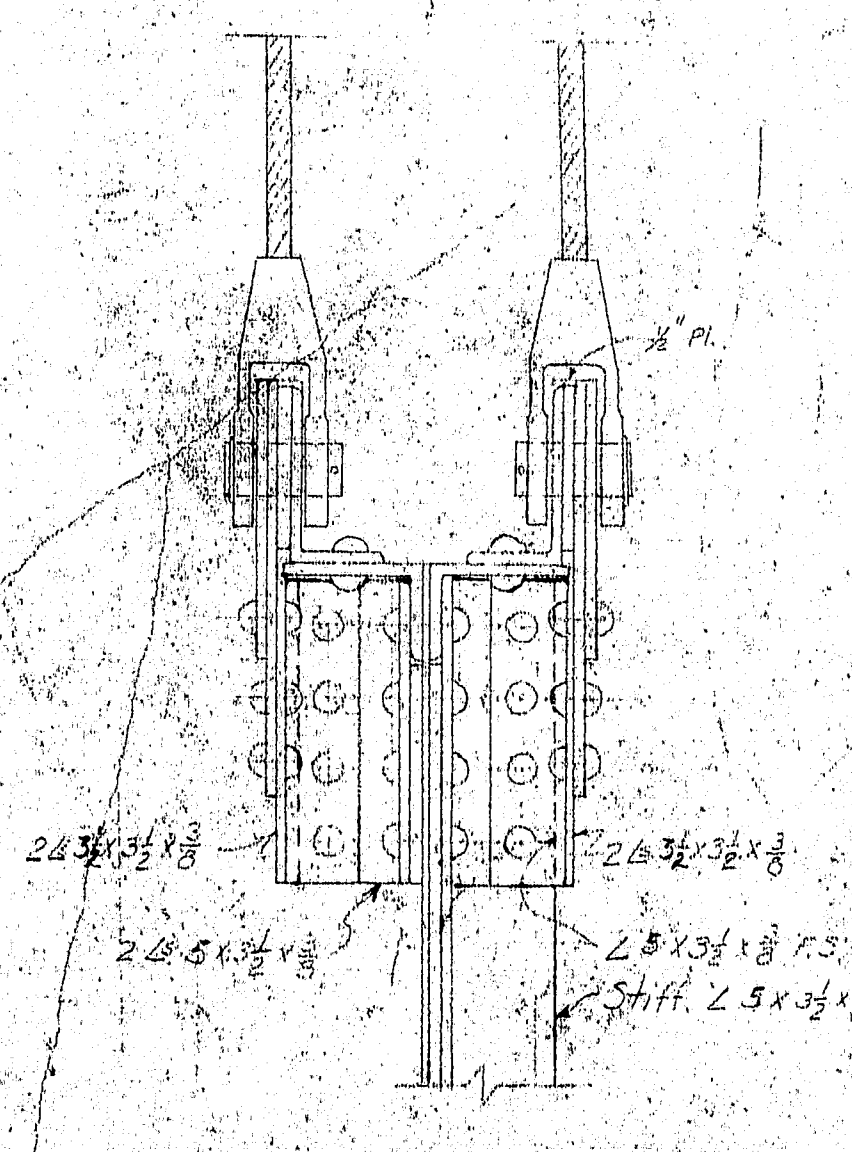
General Notes:
 1. Floor designed for H.15 loading, AASHTO Spec. 1933.
 2. Concrete 3000 lb. at 28 days, n=10, f'c=1200, f'c=13,000.
 3. Girders designed for uniform live load of 35 lb. per sq. ft. and on H.15 truck concentration between suspenders. Steel for large angles and large plates at 50,000 psi, and for main span at 60,000 psi, except main girders at 55,000 psi and ultimate 62-72,000.
 4. Reinforcing shown for deck is the type manufactured by the Reliance Steel Products Co., Rankin, Pa. A deck of equivalent strength may be substituted but the weight is not to exceed 61 1/2 lb./sq. ft.
 5. To be changed after the time of the first inspection.



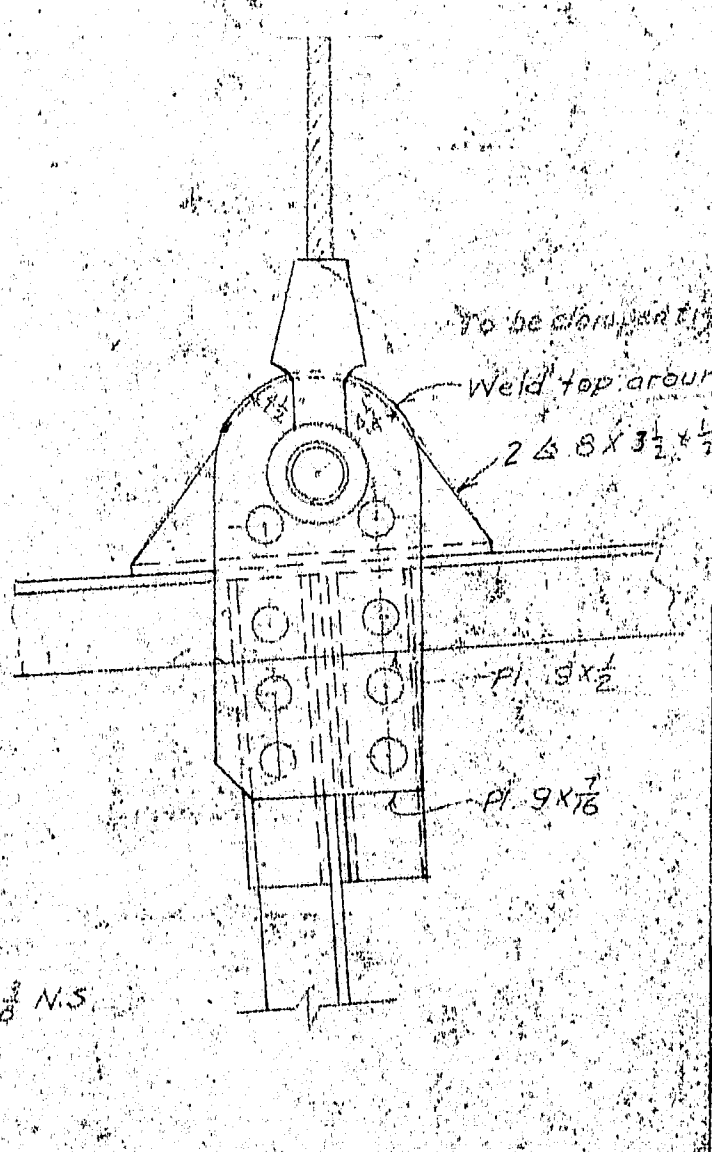
TYPICAL GIRDER ELEVATION
Scale 3/4" = 1'-0"



SPICES FOR EDGE ANGLES OF FLOOR



TYPICAL DETAIL OF SUSPENDER CONNECTION
Scale 1/2" = 1'-0"



REVISIONS	
1-7-38	Shift girder web, stiffening angles, suspender connection, floor beam and at suspenders, and web splice.
3-2-38	Added note H. 15 truck concentration between suspenders. Revised length of the deck truss at details.
7-23-37	Revised as built.
Estimated Quantities	
Structural Steel in Girders	Contract Dpt., 13,300 lb.
Deck System	1,772,000 lb. (1937)
Roadway Deck	42,110 sq. ft.
Timber Side Walk	6,827 cu. ft.

SUPERSTRUCTURE
PWA PROJECT NO. ME 1102
 DEER ISLE, SEDGWICK BRIDGE DISTRICT
 BRIDGE OVER EGGEMOGGIN BEACH
 FROM LITTLE DEER ISLE TO SEDGWICK
 HANCOCK COUNTY, MAINE
SUSPENSION BRIDGE
CROSS SECTION AND
STIFFENING GIRDERS
 ROBINSON AND STEINMAN
 ENGINEERS
 NEW YORK CITY
 SCALE AS SHOWN
 DRAWN BY
 R. S. AND
 STEINMAN

